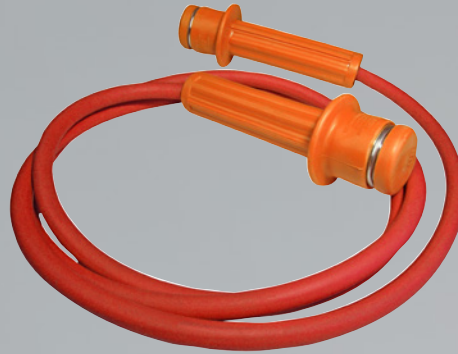


HV JUICE



TEST EVERYTHING



TRANSNET HV TEST LAB

PERIODIC TESTING
P.2



This Issue

RSTI SCREENED SEPARABLE ELBOWS

PAGE 4

YOUR CUSTOM CRUCIFIX

PAGE 6

WHICH POLE BLOCK DOES 75% OF NZ USE?

PAGE 10



Raychem
High Voltage
Link Boxes
PAGE 5

www.transnet.co.nz



TRANSNET HV TEST LAB

GLOVES
SLEEVES
MATS
BLANKETS



HARD & SOFT COVER EQUIPMENT
ELECTRICAL TESTING UP TO 200KV

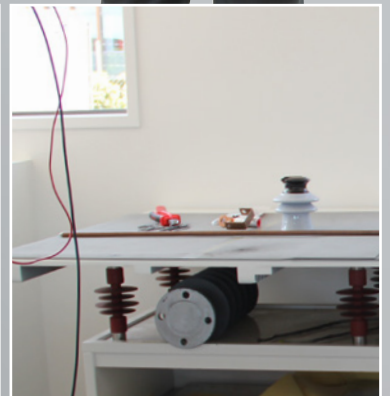
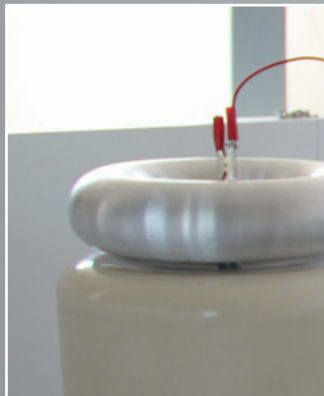
RESCUE KITS

HV PROXIMITY TESTERS

PORTABLE EARTHS

CALIBRATION

WE DO IT ALL



Contact us to book periodic testing of your equipment.



NEW & IMPROVED INDEPENDENT EARTH SPIKE & REEL

We've taken the IET15M to the next level.

This reel and spike is designed to attach to any voltage tester and boasts 15m of lead and a sturdy spike to easily pierce even the hardest ground. The T handle ensures the tester cable is protected if force is required when penetrating hard ground.

Simple to use, the Independent Earth Tester Reel and Spike has a connection point on the end of the lead to simply poke the tester probe into. The beauty of this set up is if your tester or lead fails you can easily replace them without having to replace the entire unit.

The spring operated bearing on the reel makes winding the lead user friendly and easy without twists and tangles.

KEY FEATURES

1. Sturdy Stainless Steel spike with 'T' handle
2. 15m green/yellow lead
3. Universal tester connection point (Tester sold separately)
4. Spring and bearing to help wind cable back in without twists & tangles
5. Comes tested and tagged for immediate use

CAT NO. IET15M





MAKING THE CONNECTIONS THAT COUNT

RSTI SCREENED ELBOWS

The Raychem RSTI family of screened separable elbows provide perfect sealing, electrical insulation and electrical connection to switchgear. The range offers solutions right up to 42kV with stand alone and piggy back elbows available should they be required.

Designed and tested to meet the requirements of all applicable international standards.

FEATURES & BENEFITS

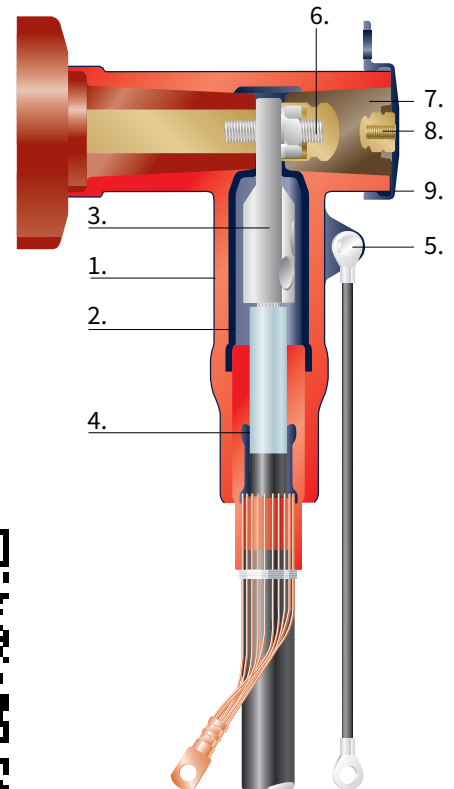
- Connector insulation is made of highly modified silicone rubber characterised by high tracking resistance, elongation at break and non-flammability.
- Insulation has permanently bonded thin walled screen to protect against accidental contact.
- No need to remove screened connector for over sheath testing
- Exceeds CENELEC HD 629.1 S2
- Design fits 630A and 1250A bushings (interface C1 and C2) as specified by EN 50180 and EN 50181
- Compact design supports the use of double "T" connections inside standard terminal boxes
- Wide application range 25mm² to 1000mm²
- Mechanical lugs make off connection
- Easily accessible rear plug with capacitive test point
- Sold as complete kit
- Standard, coupling, and surge arrester styles available



Standard, coupling, and surge arrester options

DESIGN & CONSTRUCTION

1. Screened Body
2. Inner Screen
3. Compression or Mechanical Lugs
4. Stress Cone Adaptor
5. Earthing Eye & Ground Lead
6. Threaded Pin
7. Rear Plug with Test Point
8. Test Point
9. Conductive End Cap



TECHNICAL DATASHEETS





WHAT MAKES RAYCHEM THE INDUSTRY LEADER?

TE Connectivity's high voltage link boxes HVLB provide a sealed and dry environment for high voltage cable sheath earthing connection. They reduce voltages and circulating currents.

TE offers three types of link boxes with different number of entries to bond the cable sheath to the ground. Within the SVL link box, the cable sheath is earthed via a Sheath Voltage Limiter (SVL). The GND link box is used to earth the cable sheath direct to the ground without a SVL. Within the CRO link box the cable sheaths are crossbonded.

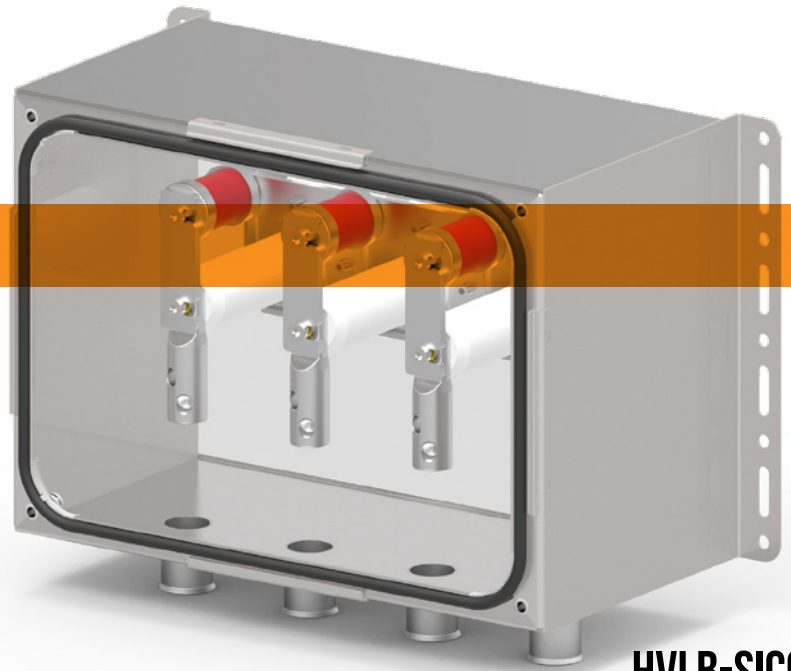
To get an easy access to the cable sheath for inspections, TE developed a reliable gasket-lid-system, which is tighter against water and dust. The lid system is equipped with a proof device for padlocks to prevent unauthorized access.

A well-arranged configuration ensures a higher reliability. Homogeneous distances between the electrical path, trustworthy electrical connections and a special developed short-circuit-yoke allow a better impulse-voltage and short-circuit withstand. For safety in an unexpected case, our box is tested to absorb the power of an internal arc with 25 kA for 0.1 sec.

Customers can count on consistent, high quality products, driven by TE's proven innovation and backed by our extraordinary customer support.

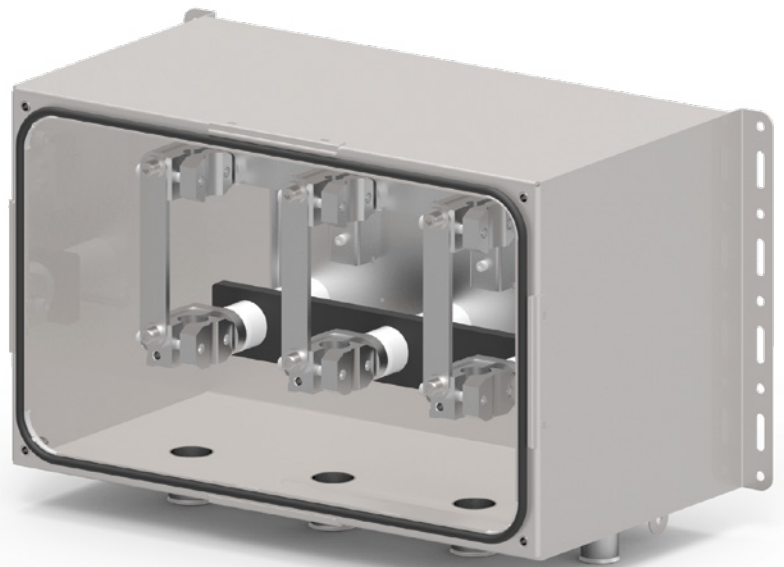
FEATURES & BENEFITS

- Impulse withstand: 65kV (HVLB-SICO)
75kV (HVLB-COAX)
- Short circuit current: 63 kA/1 s
- Internal power arc: 25 kA/0.1 s
- Tight against water and dust according to protection class IP688
- Gland sealing with WCSM heat shrinking tube
- Sequential serial number for each link box



HVLB-SICO

CABLE SHEATH BONDING WITH SINGLE CORE CABLE



HVLB-COAX

CABLE SHEATH BONDING WITH CONCENTRIC CABLE

Technical Information	
MATERIAL OF THE HOUSING	SS304 / X5CRNI17-10
SURFACE PAINTING	RAL7035, THICKNESS 0,08, FINE STRUCTURE OUTDOOR
OPTIONAL	OFFSHORE PROTECTION
OPTIONAL	PLEXIGLASS COVER (PROTECTION AGAINST ACCIDENTAL CONTACT)



VIEW DATASHEETS FOR SELECTION OPTIONS



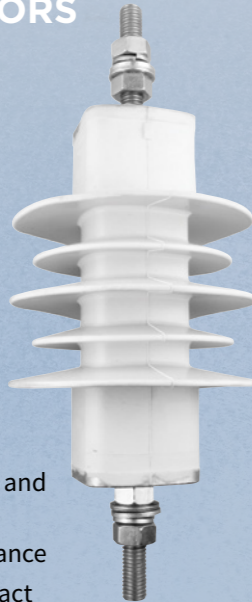


A COMPREHENSIVE RANGE OF RAYCHEM COMPONENTS TO CHOOSE FROM

STATION CLASS ARRESTORS

FEATURES

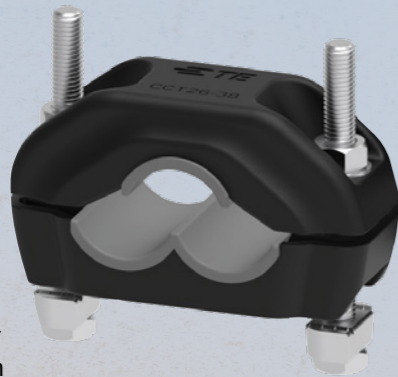
- Tested in accordance with IEC60099-4
- Superior protection margins
- Direct molded housing to prevent moisture ingress
- Low residual voltages
- High-energy handling
- Superior TOV performance
- Safe non-shattering short circuit behavior to higher current levels
- Maintenance free
- Hydrophobic silicone housing: (Tracking and erosion resistant)
- Excellent cantilever and tensile performance
- Excellent mechanical, vibration and impact withstand capability
- Quality design and manufacturing, ISO 9001 and 14001 compliant



CABLE CLAMPS

FEATURES

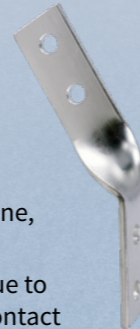
- Impact-resistant, UV-stabilized, halogen-free, polymeric flame-retardant V0 material
- Suitable for harsh environments
- High resistance to electromechanical forces
- Strong mechanical performance
- Easy and fast installation
- Stacked configurations without adapter
- Stainless Steel hardware option
- Interlocking EPDM molded inserts version for increased asset protection



TWISTED LUG BRACKETS

FEATURES

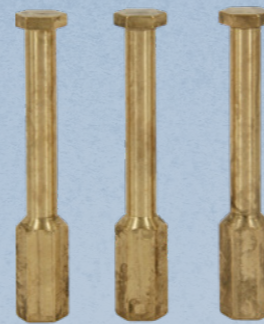
- Tinned Copper
- Ease of connection to mainline, surge arrester & droppers
- Avoids issues of corrosion due to dissimilar metals in direct contact



BRASS EARTH STUDS

FEATURES

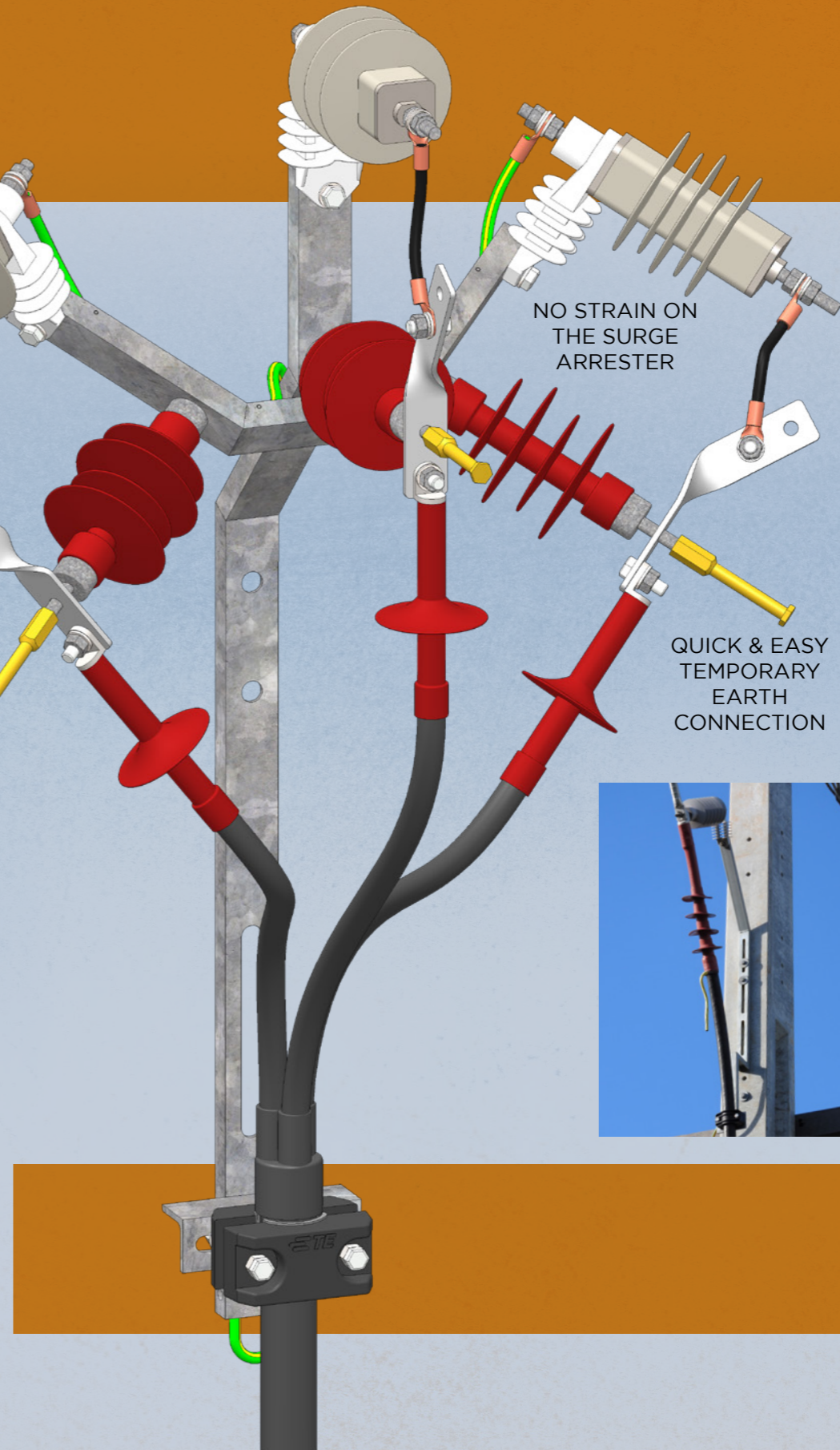
- Easily installed M12 thread
- Made from solid brass
- Attach when installing new terminations
- Can be retro fitted to existing terminations
- Easily installed by glovers ready for a shutdown



MV STAND OFF INSULATORS

FEATURES

- High strength FRP core
- Standard stainless steel fittings
- Impenetrable interfacial sealing
- Pollution resistant EVA HV insulation housing in service since the 1970's
- Alternating shed configuration for optimal pollution flashover performance
- Excellent performance in polluted environments
- Lightweight – easy installation and reduced transport costs
- High corrosion resistance
- Excellent resistance to vandalism
- Shatterproof design – breakages eliminated during installation



A crucifix redefined – We've taken an existing concept and made it better, safer and easier for workers.

FEATURES

- **Inclusion of Stand off insulators and surge arrestors** – reduces the pressure and therefore chance of cantilever stress to the surge arrestors, the stand off takes all the strain
- **Raychem Cable Clamps** – fault current tested to hold cables in place for added safety should a fault current be experienced
- **Inclusion of Brass Earth Studs** – For fast and trouble free temporary earthing
- **Ready for service** – simply mount on the pole and make off the termination, the crucifix comes populated and ready for immediate installation saving time on the job
- **Customisable** – should you require amends to the standard kit, simply contact our customer service team or your local account manager to discuss. Class 1 (HDA) & Class 2 (OCP2) surge arrester versions available in 11kV or 33kV (11kV, Class 2 (OCP2) version shown). Available as crucifix of single cable brackets (as per inset image).
- **Pre-wired** earthing connections to surge arrestors



Don't see what you need? Contact us for a solution.

CUSTOM DESIGN & ENGINEERING FOR CUSTOM SOLUTIONS





NZ'S LEADING **LIGHTWEIGHT** ARC RATED WORK GEAR



8.7
CAL
HRC2

Rating clearly visible

215gsm Woven Lenzing Blend Arc Armour fabric

Adjustable cuffs & zip gusset

Inherently Flame Retardant, Antistatic and Arc Flash Protection

High tensile strength fabric

Non-conductive zips



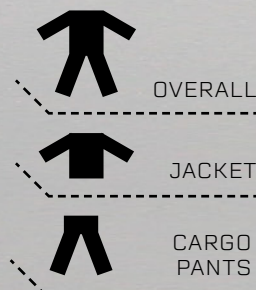
Made with LENZING™ FR – a sustainably produced, inherently flame-resistant cellulosic fibre – our Arc Armour PPE clothing range is not only comfortable, functional, and US NFPA 70E compliant, but also a durable and truly eco-friendly option for a variety of industrial applications.

- ▶ **Very lightweight - cool to wear**
- ▶ Rugged & durable
- ▶ Premium Grade HRC2/PPE2
- ▶ Proprietary 215gsm Arc Armour fabric

NEED COMPANY BRANDING?

Talk to us about getting your Arc Armour safety gear customised with your logo.

RANGE INCLUDES



VIEW THE RANGE



STANDARD



FEATURES

- 40 cal/cm² ATPV Rating
- 88/12 Premium Indura Cotton Blend
- Hook & Loop enclosure
- Dual expansive back panelling
- 32" long jacket, 32" inseam overalls
- Standard or lift front clear hood options
- Meets current ASTM F1506 and NFPA 70E standards



PREMIUM



FEATURES

- 40 cal/cm² ATPV Rating
- **Approximately 50% lighter fabric weight than standard 40 calorie garment**
- 2 layers – 5 oz/yd² & 6 oz/yd² - Sewn with Nomex® thread
- 32" long jacket, 32" inseam overalls
- Standard or lift front clear hood options
- Hook & Loop enclosure
- Dual expansive back panelling
- Meets current ASTM F1506 and NFPA 70E standards



HOOD OPTIONS

SWITCHGEAR HOOD



FEATURES

- Premium Clear HT Lens
- Standard switchgear style

LIFT FRONT HOOD



FEATURES

- Extended Peripheral vision
- Permanent Anti Fog Visor
- Highly Transparent Visor
- Lift Front Design - easy access



Advanced Colour Differentiation Technology



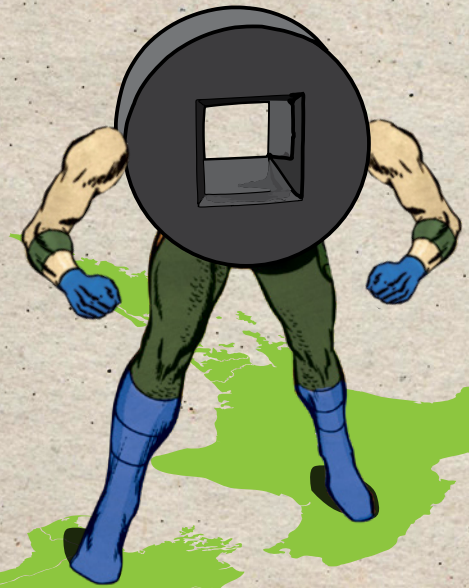
Made in the USA





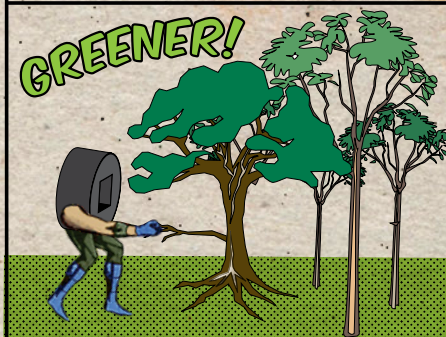
WHEN REGULAR CONCRETE BLOCKS JUST CAN'T HACK IT...

ECOBLOCK!

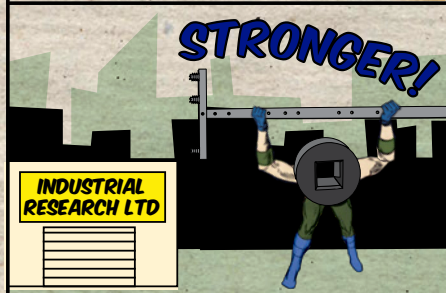


REDUCES RISK OF LIFTING RELATED INJURIES

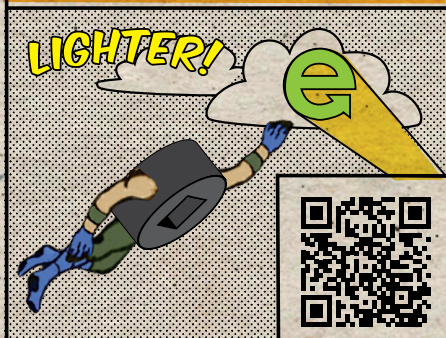
Manufactured from repurposed plastic, ECOBlocks are harm free to the environment throughout their long life and recyclable after their useful life ends!



Under stress testing at Industrial Research Ltd. concrete crumbled fairly easily, but the plastic newcomer continued to resist!



The average existing Breast Block weighs around 75 kg, while TransNet's ECOBlock Breast Block weighs 11 kg!



Similar installed cost to concrete blocks with less risk

Full range - includes heel blocks, breast blocks, donuts (for both Humes & Busck poles) and Anchor blocks.

Environmentally responsible - made from repurposed HDPE plastic and can be recycled

Lightweight and easy to transport - no need for hiab or fork hoists

Safer - won't crack or break like concrete can

Part No.	Description	Dimensions (mm)			Weight (kg)	Strength (kN)
		Length	Width	Depth		
HB450	Heel Block	450	350	100	5	135
HBDNUT430	Single Pole Donut Block - Humes Pole	430 Diameter	225	10	10	200
HBDNUT480	Single Pole Donut Block - Busck Pole	480 Diameter	225	14	14	200
BB600	Breast Block	600	350	100	6	140
BB900	Breast Block	900	350	100	11	150
BB1200	Breast Block	1200	350	100	14	200
AB1200*	Anchor Block - 10mm Plate	1200	350	100	25	20

*Up to 200kN rated AB1200 is available on special request.





ASK THE EXPERTS
WORLD LEADERS
 IN THE SUPPLY OF
Hookstick Disconnect Switches



BEST IN CLASS DESIGN & PERFORMANCE

SUPERIOR MECHANICAL PERFORMANCE

- Rigid Blade Design
- Easiest blade to pull and close (longest mechanical advantage)
- Contact design avoids any areas for trapped ice to interfere with blade structure
- Large formed Stainless Steel load buster hook

SUPERIOR ELECTRICAL PERFORMANCE

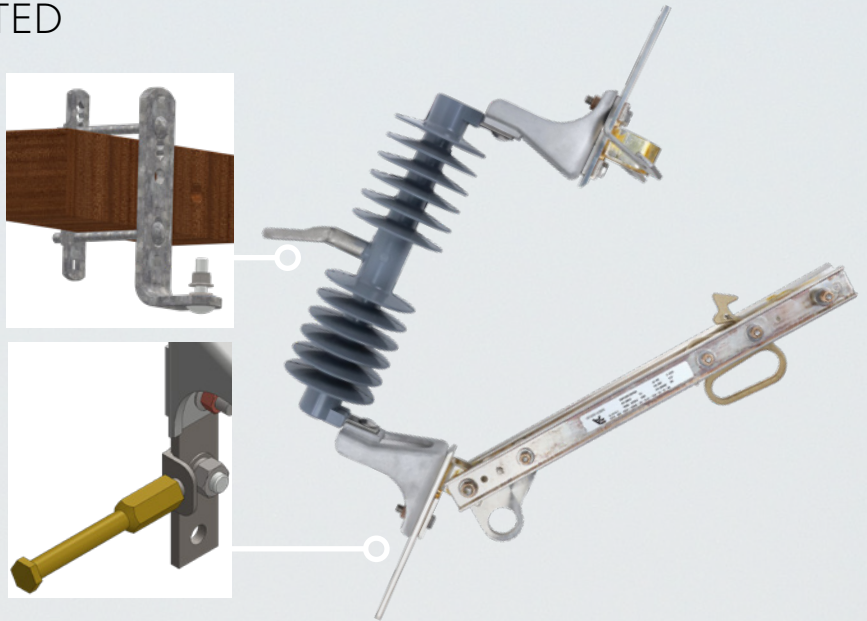
- Best electrical conductivity
- Full silver plating on hinge, contact and blades
- 25kA sym 1 sec short-time withstand

MARINE GRADE SINGLE INSULATED DISCONNECT SWITCH

This marine grade single insulated disconnect switch is available in both 125kV BIL and 150KV BIL and comes with a NEMA mounting bracket. 11/22/33kV, 900A.

KEY FEATURES

- 900A, 11/22/33kV
- Polymer Insulator
- Silver plated copper blades, brass contact & hinge
- NEMA B bracket
- Integral 90° blade stop
- Tin plated copper terminals
- Pull to open/close operation
- Hardware 316 Stainless Steel, nuts silicon bronze
- Brass temporary earth spigot
- 316 Stainless Steel Load Buster Hooks

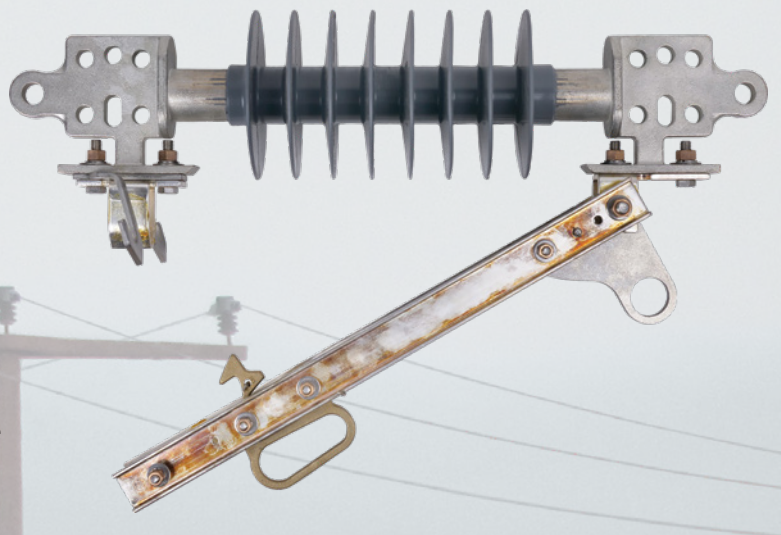


MARINE GRADE INLINE DISCONNECT SWITCH

Inline Disconnect Switch, 11/22/33kV, 900A, 200kV BIL silicone insulator, marine grade. (316SS hardware and brackets. All Aluminium components nickel plated, all hex nuts silicon bronze.)

KEY FEATURES

- 900A, 11/22/33kV
- Polymer Insulator
- Tinned plated bronze end fittings
- Silver plated copper blades, brass contact & hinge
- 316 Stainless Steel load buster hooks
- Integral 90° blade stop
- Pull to Open / Pull to Close operation



WHAT'S IN A NAME?

Introducing ActivArmr Gloves



Auckland

78 Cryers Road
East Tamaki
Auckland
NEW ZEALAND
Ph 0800 442 182
PO Box 39 383
Howick, Auckland

Wellington

10 Petone Ave
Petone
Wellington
NEW ZEALAND
Ph 04 576 2530
PO Box 39 383
Howick, Auckland
NEW ZEALAND
sales@transnet.co.nz

TransNet Tonga

Nuku'alofa
Lakalakaimonu Multi Utility
Complex
Taufa'ahau Road
Poutaha
Nuku'alofa
TONGA
Ph +67 627 939
PO Box 2932
Nuku'alofa
TONGA
transnet@kalianet.to

SAME GREAT QUALITY

NEW NAME

MARIGOLD INSULATING GLOVES ARE NOW

ACTIVARMR®

PERSONAL PROTECTIVE GEAR



ACTIVARMR®
Ansell
9
EN 60903 : 2003
CLASS 00
CATEGORY A/Z/C
CE 0493
i
EAC
TP-TC 019/2011
MM.YYYY LOT CODE
Made in Malaysia

9
ACTIVARMR® Ansell
ANSI/ASTM D120 EN60903
CLASS 00 TYPE1
MAX USE VOLT 500V AC



TransNet NZ Ltd has made every reasonable effort to ensure the accuracy of this information and it is to the best of our knowledge correct and reliable. Under no circumstances does this constitute an assurance of any particular quality or performance and users should independently evaluate the suitability of products for their desired application. All information in this publication including pricing, drawings, illustrations, images and graphic designs are reflections of our current understanding. TransNet NZ Ltd reserves the right to make any adjustment to this information at any time. Our liability for the products outlined in this publication is set forth in our standard terms and conditions of trade. In case of any potential ambiguities or questions, please contact us for clarification.